

© ArcViz PTY LTD 2019  
www.arcvizstudio.com.au

# 2-4 Inverness St.

BRUNSWICK EAST



| 3

## INDUSTRIAL LUXURY

2-4 INVERNESS STREET BRUNSWICK EAST

Nine uniquely exclusive town-homes in the heart of Melbourne's bustling, Brunswick East. A reclaimed, industrial exterior meets modern interior luxury in this beautifully crafted, warehouse retrofitted masterpiece.







## INSPIRED ARCHITECTURE

FOR THE SWEETEST MOMENTS IN LIFE

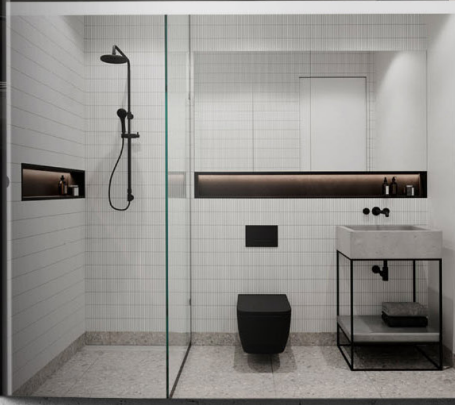
Draw inspiration every day from a kitchen that invites exploration of your inner master chef. The engineered European oak floors meet the Tero Nero black bench tops and Ashgrove joinery with exceptional craftsmanship.

Light-filled luxurious bedrooms, generous walk-in-robos and designer en-suites offer get away retreats within each home.

In your bathroom, stunning white tiles contrast with high-end black porcelain and matte black steel fittings, while seamlessly integrated niches are illuminated with heavenly halo lighting.











## LIFESTYLE & INNER CITY CONVINIENCE

---

With an Unparalleled Lifestyle and uniquely Suburban artistic vibe, Brunswick has developed its own unmistakable identity. Artists, musicians, families and professionals proudly live side by side in a bustling community environment surrounded by delectable cafes, bars, parks and walking trails.

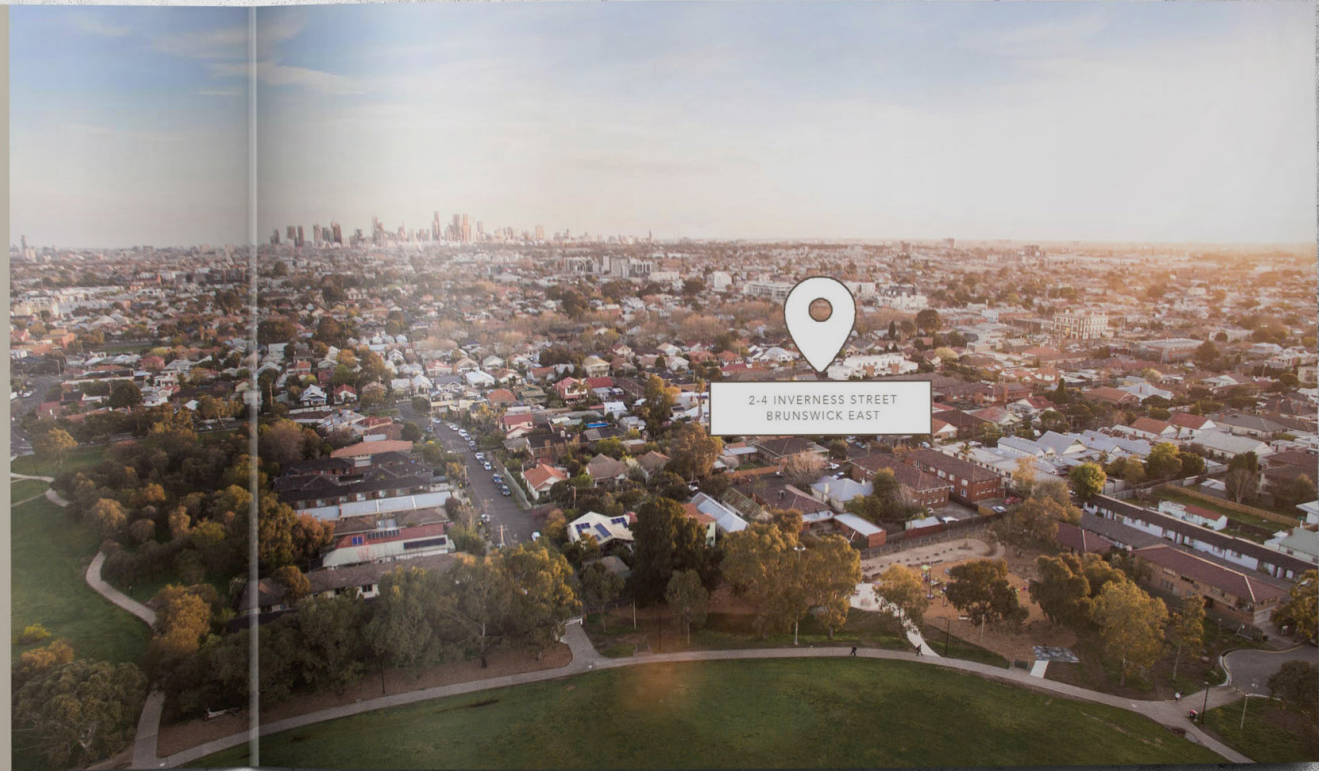


## LOCATION & INNER CITY CONVINIENCE

---

Inverness Street's enviable location is only minutes walk from CERES Community Gardens, Northcote Golf Club and the beautiful Merri Creek and it's relaxing walking trails.

With ample dining options on Melbourne's infamous Lygon Street and multiple primary schools to choose from, there isn't much that Inverness Street's prime location doesn't have to offer.





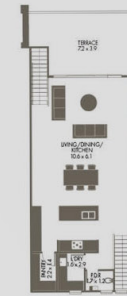
2-4 Inverness St.  
BRUNSWICK EAST

SITE MAP

Dwellings 9



Ground Floor



First Floor

2-4 Inverness St.  
BRUNSWICK EAST

Dwelling ONE

Carparks	2
Bedrooms	3
Bathrooms	2.5
Internal	250m <sup>2</sup>
<b>Total</b>	<b>313m<sup>2</sup></b>



**2-4 Inverness St.**  
BRUNSWICK EAST

Dwellings  
TWO, FOUR & SIX

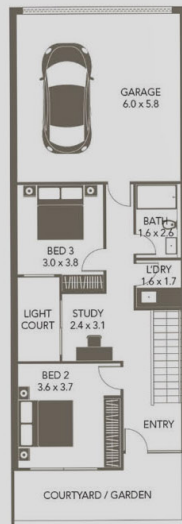
Carparks 2

Bedrooms 3

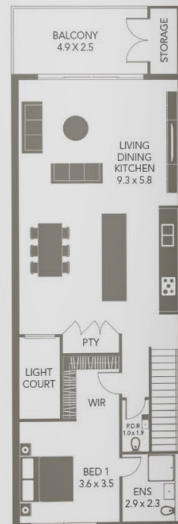
Bathrooms 2.5

Internal 189m<sup>2</sup>

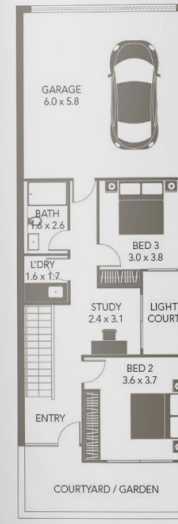
Total 229m<sup>2</sup>



Ground Floor



First Floor



Ground Floor



First Floor

**2-4 Inverness St.**  
BRUNSWICK EAST

Dwellings  
THREE, FIVE, SEVEN

Carparks 2

Bedrooms 3

Bathrooms 2.5

Internal 189m<sup>2</sup>

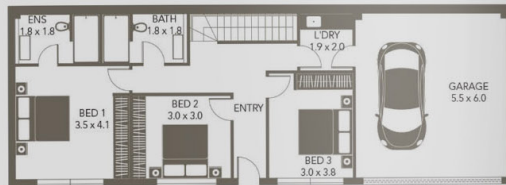
Total 229m<sup>2</sup>



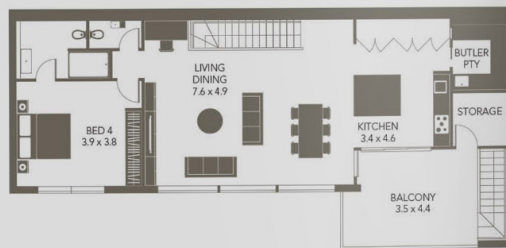
**2-4 Inverness St.**  
BRUNSWICK EAST

Dwelling EIGHT

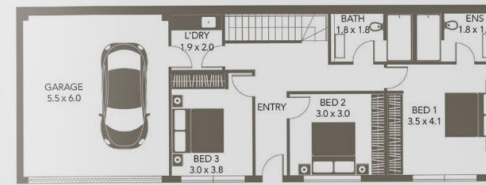
Carparks	2
Bedrooms	4
Bathrooms	3.5
Internal	231m <sup>2</sup>
<b>Total</b>	<b>313m<sup>2</sup></b>



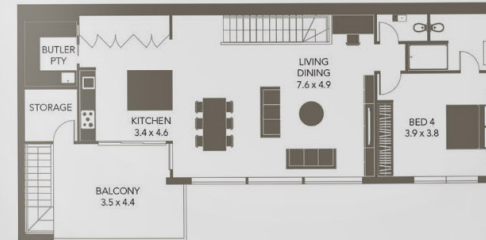
Ground Floor



First Floor



Ground Floor



First Floor

**2-4 Inverness St.**  
BRUNSWICK EAST

Dwelling NINE

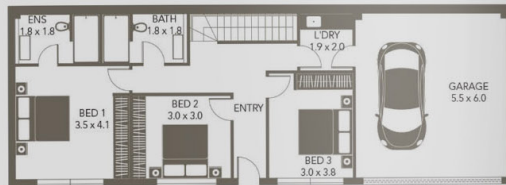
Carparks	2
Bedrooms	4
Bathrooms	3.5
Internal	231m <sup>2</sup>
<b>Total</b>	<b>310m<sup>2</sup></b>



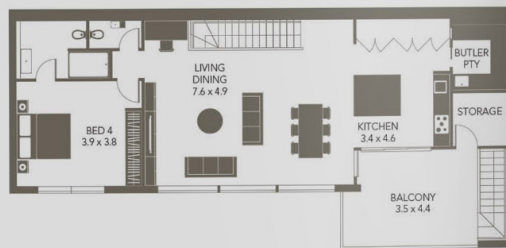
**2-4 Inverness St.**  
BRUNSWICK EAST

Dwelling EIGHT

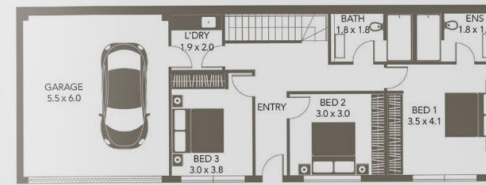
Carparks	2
Bedrooms	4
Bathrooms	3.5
Internal	231m <sup>2</sup>
<b>Total</b>	<b>313m<sup>2</sup></b>



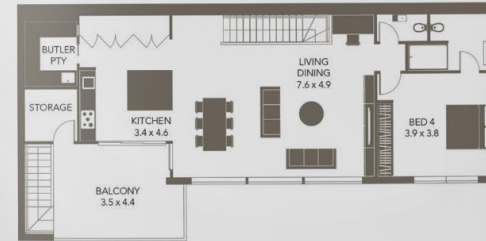
Ground Floor



First Floor



Ground Floor



First Floor

**2-4 Inverness St.**  
BRUNSWICK EAST

Dwelling NINE

Carparks	2
Bedrooms	4
Bathrooms	3.5
Internal	231m <sup>2</sup>
<b>Total</b>	<b>310m<sup>2</sup></b>